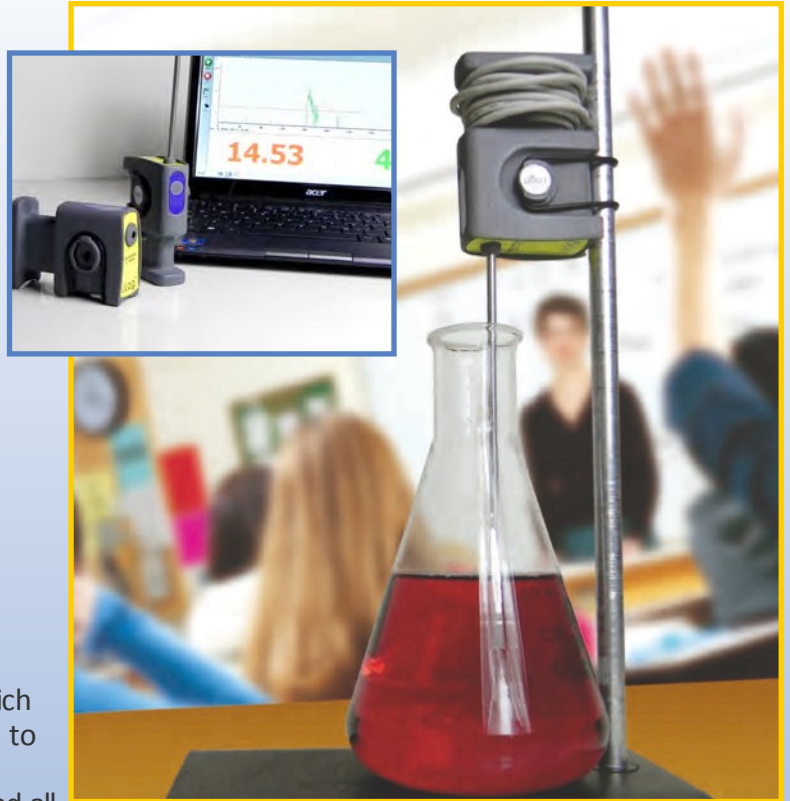




uLog • Easy • Versatile • Tough • Affordable

NEW SENSORS WHICH PLUG DIRECTLY INTO YOUR COMPUTER YOUR COMPUTER IS THE DATALOGGER!

Introducing a really easy and low cost way to do sensing and datalogging in the lab or classroom. uLog sensors plug directly into your standard computer which becomes the datalogger - data can also be transferred to spreadsheets, word processors, email etc instantly. uLog is easy and fast for teachers and students alike and all sensors are supplied with software.



uLog SENSORS

EASY, AFFORDABLE DATALOGGING



- 1. PLUG AND GO** USB cable built in which plugs into your computer and works - no batteries required as it is powered from the computer!
- 2. USE MANY SENSORS TOGETHER** The built in multicolour LED automatically shows the sensor channel.
- 3. EASY** Push button allows you to start logging from the sensor without touching the keyboard or mouse.
- 4. CLIP TOGETHER** Sensors lock together for easy storage and use.
- 5. NEAT** Built in cable storage - keeps them tidy and easy to store.
- 6. VERSATILE** Unique design allows uLog sensors to be free standing, hand held, or clipped to a ring stand.
- 7. AFFORDABLE** The uLog system also makes great financial sense as no separate datalogger is required, just your regular computer which can be used for lots of other things and makes data transfer and report writing instant. Datalogging software is supplied with every sensor and is compatible with Windows, Mac OS X and Linux computers

No datalogger required, just your regular computer!



For the best sensors you need the best datalogger - your computer!

You choose what suits you best, from a regular desktop or notebook PC to a compact netbook or a slim tablet and all of your favorite programs already there can be used to analyse, report, share or email your experiment data. No batteries are required as each sensor takes its power from the computer - easy to manage and no hidden running costs.

You have a wide choice of computers as the comprehensive datalogging software supplied with every uLog sensor is Multiplatform and so compatible with Windows (inc XP, Win 8, Vista and 7), Mac (OS X 10.4 & above) and Linux (most popular distributions) - it only needs to be installed once to work with every uLog sensor. So you can either use your existing computer or share the sensor with others - the software is exactly the same to use on Windows, Mac or Linux and a low cost unlimited user site license upgrade is also available if you want to install it on every computer.



Sample of sensors available

uLog Light gate sensor (pair) D104035

uLog Carbon dioxide sensor D104055

uLog pH sensor D104040

uLog ultrasonic range sensor D104030

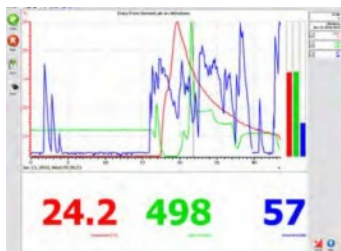
uLog Light level sensor D104015

uLog Temperature sensor D104010

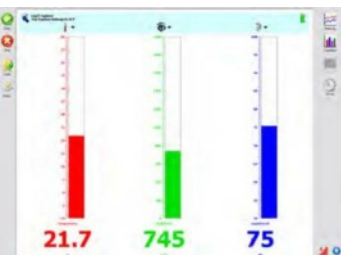
uLog Sound sensor D104020

Software

Each uLog comes with single user LogIT SensorLab Standard software.



Multi display showing graph, bars & large digits



- Automatic dynamic graph scaling
- Fast with trigger to 20,000 readings/s
- Overlay 'fast with trigger' traces
- Instant data export to Excel, etc
- Graph, table, Big digits, Gauges
- Split Screen view options
- Table highlight auto tracks cross hair
- Overlapping timing events
- Bright new really easy to use interface
- Works same way on every platform
- Ideal for netbooks, tablets, desktops and whiteboards
- Supports USB, serial & bluetooth
- Windows 7, Windows 8, Vista, XP or 2000
- Mac OS X 10.4, 10.5, 10.6
- Linux - various distributions (see www.logitworld.com)

Whole site license available:

uLog SensorLab single user to site license upgrade

Accessories

- uLog -USB sensor extension cable (3M)
- USB to standard Logit sensor adaptor - to use with the more extensive range of sensors sold for the LogIT Black Box*

*see website www.sitech.co.nz > science and robotics > data loggers or download flyer here

- uLog -USB pH adapter & replaceable electrode set

*For use with ion electrodes (D1004x) – see website www.sitech.co.nz > science and robotics > data loggers for more info

- uLog pH ISE (ion selective electrodes) mv adaptor (DH104060)*

- *For use with ion electrodes (D1004x) – see website www.sitech.co.nz > science and robotics > data loggers for more info

Email: sales@sitech.co.nz Free Phone 0800 100 607 Website: www.sitech.co.nz